

# KIK CONTROLLERS



Bidirectional  
protocol



Radio control

# KIK CONTROLLERS

The KIK remote controls offer versatile and precise solutions for controlling curtains, blinds, and awnings, with options to manage between 1 and 15 devices depending on the model. All remotes share a sleek and compact white design, but each model incorporates specialized buttons: the KIK 1 and KIK 15 allow efficient control of multiple devices, the KIK Sun offers manual or automatic opening modes with a sunlight function, and the KIK Orienta 15 adds precise adjustment for the orientation of slats in vertical blinds.

## Referencias:

<b>KIK 1 CHANNEL</b>		BD.003.101	<b>KIK ORIENTA</b>		75.003.015
<b>KIK 15 CHANNELS</b>		BD.003.115	<b>KIK SUN</b>		BD.003.115 SUN



KIK 1



KIK 15



KIK SUN



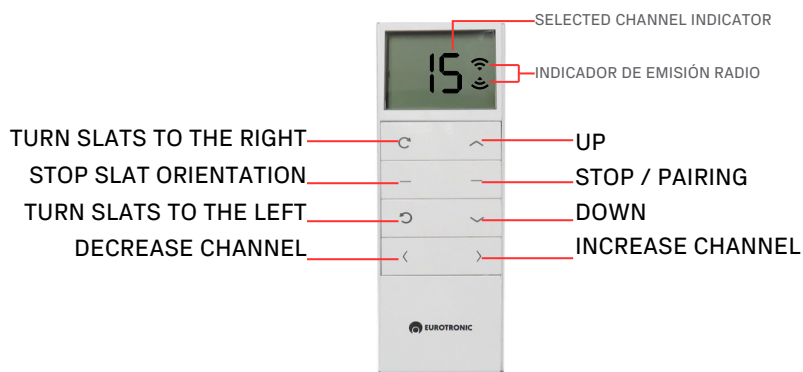
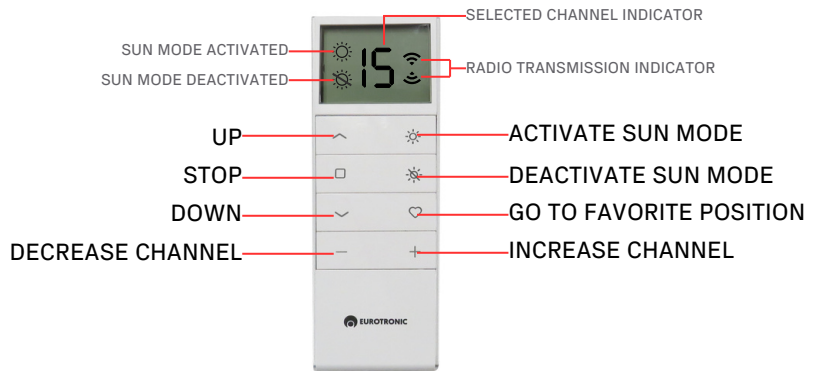
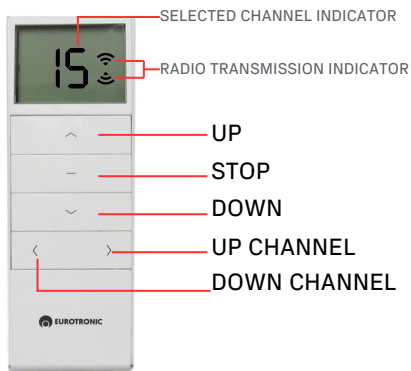
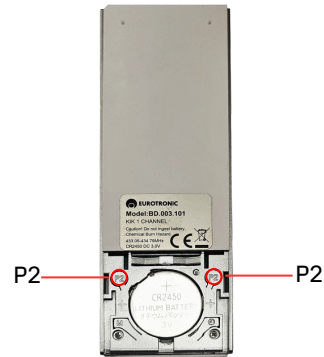
KIK ORIENTA

- Controls for bidirectional and unidirectional motors.
- Radio frequency 433.92 MHz
- Dimensions of 63 x 35 x 13 mm.
- They have channel limitation.
- They have a channel to operate all devices simultaneously.
- KIK SUN has a SOL function.
- KIK ORIENTA has buttons to rotate the adjustable slats of vertical blinds.

## Características técnicas

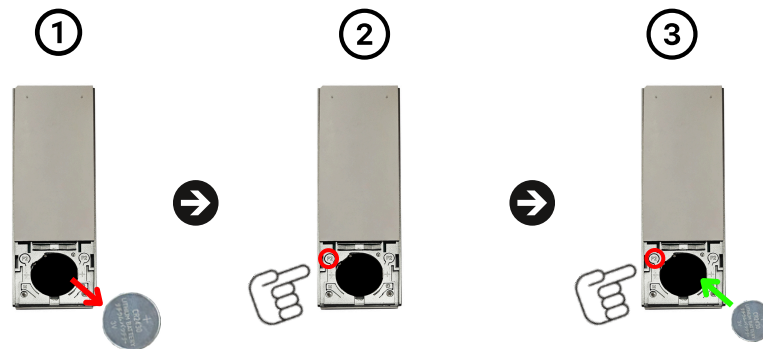
Name	Channels N°	Power supply	Battery type	Frequency	Temp	Sizes
KIK 1	1	3 V	Lithium CR2450	433.92 Mhz	0 - 50° C	44 x 128 mm
KIK 15	15	3 V	Lithium CR2450	433.92 Mhz	0 - 50° C	44 x 128 mm
KIK SUN	15	3 V	Lithium CR2450	433.92 Mhz	0 - 50° C	44 x 128 mm
KIK ORIENTA	15	3 V	Lithium CR2450	433.92 Mhz	0 - 50° C	44 x 128 mm

# Key Descriptions and On-Screen Indicators



# INSTRUCTIONS:

## 1. PROTOCOL CHANGE (UNIDIRECTIONAL / BIDIRECTIONAL)



### Procedure:

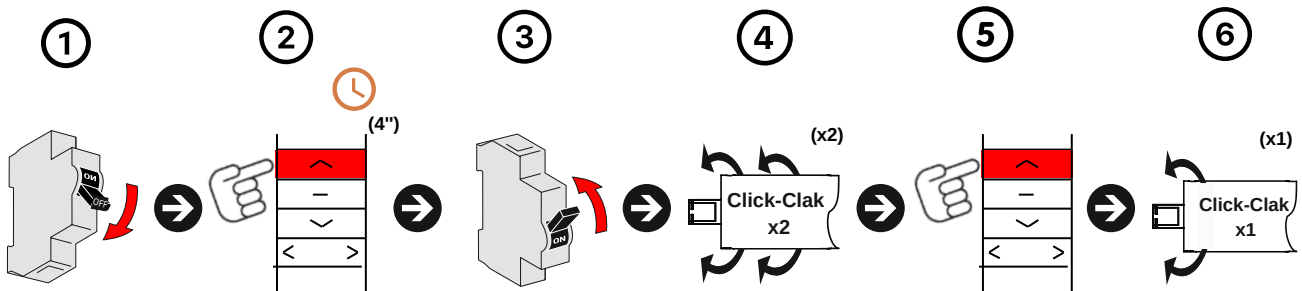
1. Remove the battery from the remote.
2. Hold down the left P2 button.
3. While holding the P2 button on the remote, place the battery back in place.

**The motor will confirm the unidirectional (1) or bidirectional (2) mode on the screen. The KIK1 will blink once (unidirectional) in blue or twice (bidirectional) in blue between the stop button and the down button.**

**The unidirectional mode only works with KIK1 and KIK15.**

# INSTRUCTIONS:

## 2. Link as the first transmitter in unidirectional mode.

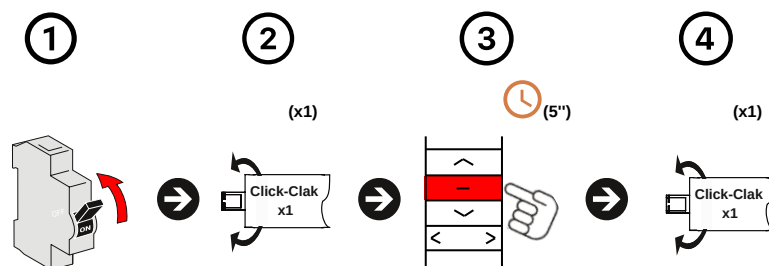


### Procedure:

1. Disconnect power.
2. Press the (UP) button for **four seconds (4")** and without releasing the up button, reconnect the power.
3. The motor will emit one beep (x1) and **two "CLICK-CLACK"** sounds (x2).
4. Press the (UP) button again to confirm.
5. The motor will emit **one "CLICK-CLACK"** sound (x1).
6. The transmitter will be linked.

Linking in unidirectional mode only works with KIK1 and KIK15

## 3. Link first transmitter in bidirectional mode.

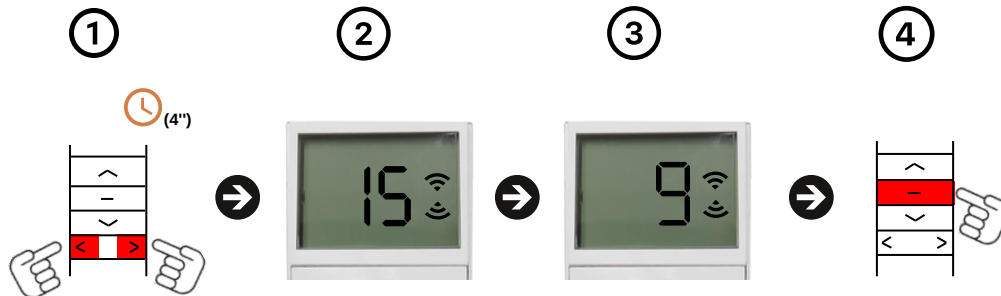


### Procedure:

1. Apply power. The motor will make a 'CLICK-CLACK' (x1).
2. Press (STOP) on the remote to register for five seconds.
3. The motor will make a 'CLICK-CLACK' (x1).

# INSTRUCTIONS:

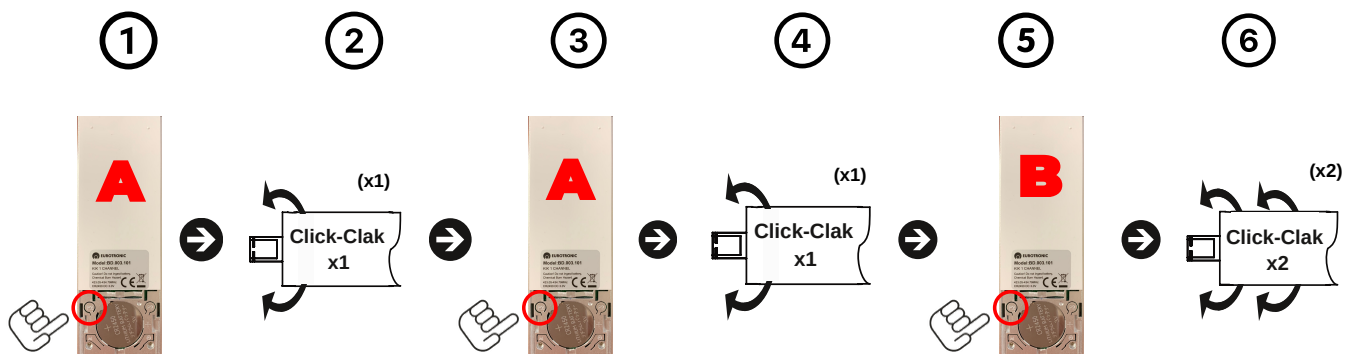
## 4. Limit the number of channels



### Procedure:

1. Press the (RIGHT + LEFT) buttons for **four seconds (4"')**.
2. The number 15 will appear on the screen.
3. Choose the number of channels to use.
4. Press the (STOP) button to confirm.
5. The remote will be limited

## 5. Make a copy of the main remote



### Procedure:

1. Press the (P2) button located behind the already paired remote (A).
2. The green LED will blink.
3. Press the (P2) button of the same remote (A) again.
4. The green LED will blink.
5. Then, press the (P2) button on the new remote (B) to confirm.
6. The green LED will blink 5 times.
7. The additional remote will be paired.



<https://www.eurotronic-europe.com>

---

C/Pica d'Estats, 108-118  
Polígono Industrial Sant Isidre 08272  
Sant Fruitós de Bages (Barcelona)  
ESPAÑA

[pedidos@eurotronic-europe.com](mailto:pedidos@eurotronic-europe.com)  
Tel: +34 932 420 108

Follow us on social media:

